

STEERING COLUMN HUB SHAFT



XAP EXPERTISE: PRECISION, RELIABILITY, AND IN-HOUSE MANUFACTURING

For nearly 30 years, XAP has been designing and manufacturing mechatronic and electronic components for the most demanding environments in motorsports and industry.

With the establishment of its machining workshop and high-performance machines, the XAP R&D team has redeveloped its hub axle in-house, a critical part of the Quick Release system that connects the steering column to the steering wheel.

This strategic decision has enabled the integration of design, machining, and quality control within the Calvisson workshops, ensuring total control of the process, superior mechanical performance, and complete traceability.

***PRECISION STARTS AT THE HEART
OF THE SYSTEM.***



PRECISION THAT FITS.

IN-HOUSE DESIGN AND ENGINEERING:

Optimized geometry, rigidity, and angular repeatability.

MACHINING IN OUR WORKSHOPS:

5-axis CNC machining from a single block: elimination of assembly tolerances and improved mechanical strength.

FUNCTIONAL TOLERANCES TO ONE HUNDREDTH:

Assembly without radial or axial play.

HEAT TREATMENT AND SURFACE ANODIZATION:

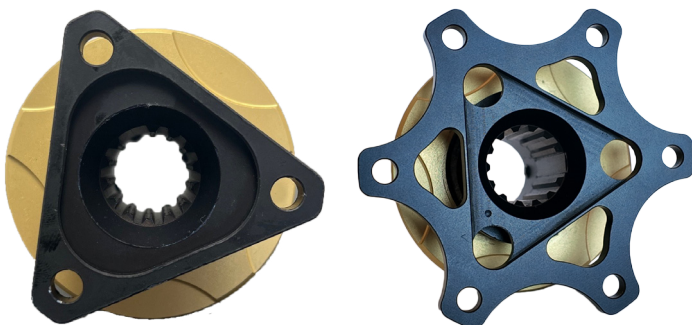
Maximum resistance to wear and corrosion.

UNIVERSAL COMPATIBILITY:

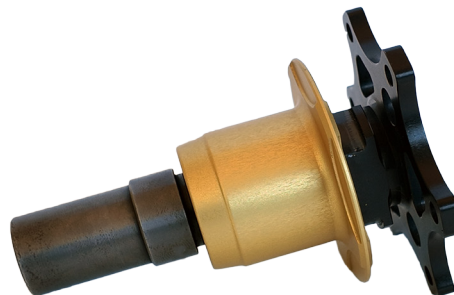
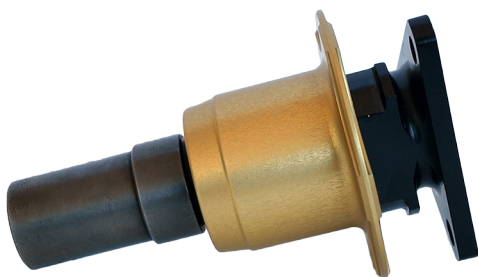
Compatible with all XAP steering wheels and its 3-point and 6-point XAP Quick Release systems.

INTEGRATED FRENCH MANUFACTURING:

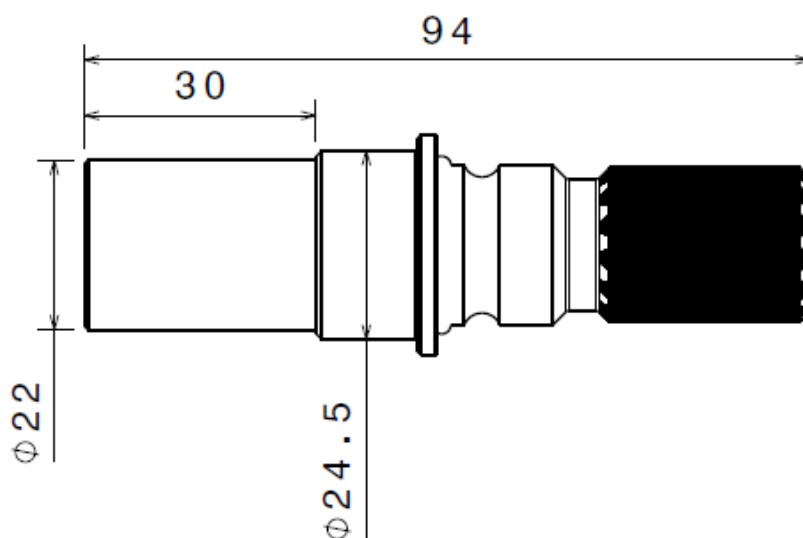
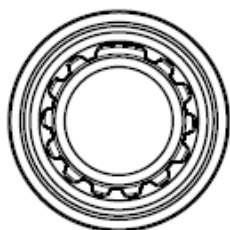
Availability, consistency, and customization on request.



MORE INFORMATION ON WWW.XAP.FR



► QUICK RELEASE: **STEERING COLUMN HUB SHAFT**



TECHNICAL SPECIFICATIONS

Material	One-piece steel CNC 5-axis machined (15CDV6)
Surface treatment	Brunishing
Functional tolerances	< 0.01 mm on internal spline
Radial / axial play	0 μ m (zero-play fit)
Angular repeatability	< $\pm 0.03^\circ$
Mechanical strength	> 1 500 N m (traction / torque)
Compatibility	Quick Release XAP 3 points and 6 points / XAP steering column
Weight	120 gr

ENVIRONMENT & COMPLIANCE

Compliance	FIA homologation
Origin / manufacturing	100 % XAP – Calvisson (France)

REFERENCES

ME0139	STEERING COLUMN HUB SHAFT CENTRAL CONNECTOR
ME0151	STEERING COLUMN HUB SHAFT
ME0001	QUICK RELEASE XAP 3 POINTS
ME0138	QUICK RELEASE XAP 6 POINTS