

## E-SHIFT 2LV3



## XAP IS THE WORLD LEADER IN ELECTROMAGNETIC ACTUATORS FOR SEQUENTIAL GEARBOXES.

The E-Shift2-LV is an electric push/pull actuator developed specifically for the requirements of modern motorsport to command a sequential gearbox.

The E-Shift2-LV is a mono block assembly. The installation is very simple and once installed calls for very little service, unlike pneumatic and hydraulic systems where the installation requires many components and regular service.

XAP's electromagnetic actuators are reliable, consistent and do not need much maintenance.

## POWERFUL AND RELIABLE ELECTRO- MAGNETIC GEARBOX ACTUATORS.

MOVING MAGNETS TECHNOLOGY

MAGNETIC SPRING INSIDE

HIGH PUSH/PULL FORCE

VERY RELIABLE.

NO CONTACT SHAFT POSITION SENSOR  
OPTIONAL

35ms TYPICAL GEAR CHANGE TIME

MAINTENANCE FREE

MORE COMPETITIVE THAN CURRENT TECHNOLOGY

AUTO SPORT CONNECTOR

PROGRESSIVE PUSHING MODE

ISOLATED POWER AND CAN

NO PUMP, NO SEAL, NO TUBE, NO FLUID ...

**CAR ELECTRIFICATION IS THE FUTURE  
OF MOTORSPORT !**



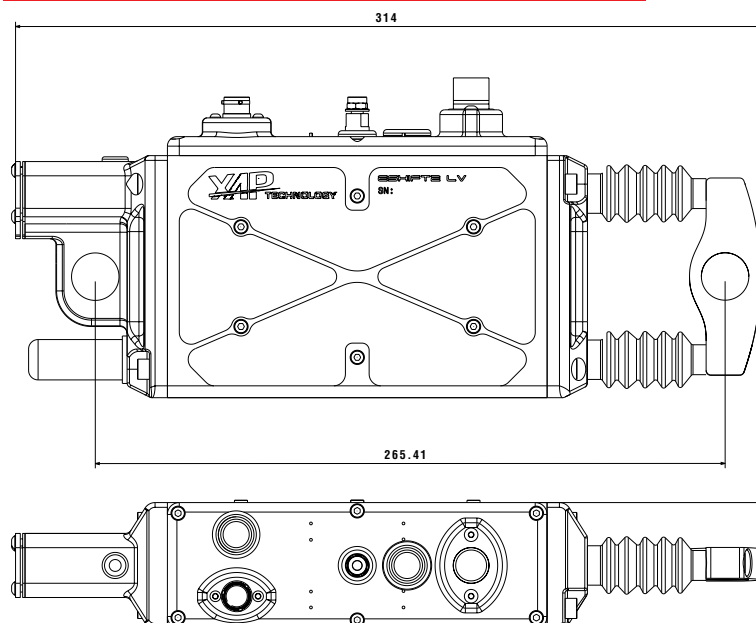


Baudrate	1 MB/s
<b>Config Options</b> <input type="checkbox"/> Pulse ON <input checked="" type="checkbox"/> Auto center <input checked="" type="checkbox"/> Inverse Direction <input type="checkbox"/> Safe Mode <input checked="" type="checkbox"/> Diag <input checked="" type="checkbox"/> Start Ramp <input type="checkbox"/> CAN Command	
UP Act Time	400
DW Act Time	350
UP Ret Act Time	82
DW Ret Act Time	82
Power %	16.072
Return Power %	99.96
Min Bound	23570
Center Bound	6190
Max Bound	48230
<b>Start Ramp Options</b> <input type="checkbox"/> Auto Time: 20 Factor: 12 Pulse Time: 200 Safety Time: 200 PWM on Time: 7 PWM off Time: 2 Sensor Bound Tol: 1000	



## ► GEARBOX ACTUATOR: *E-SHIFT2-LV3*

### DIMENSIONS



Weight : 4.2 kg to 5 kg

### TECHNICAL SPECIFICATIONS

Stroke +/- 18 mm.

Electric consumption Equivalent to 20 W for one gear shift each two second

Peak current 100 A

Started pushing force 900 N max

Middle pushing force 700 N max

Diagnostic on Can YES

Command by Can YES

Command by wire CMD\_UP, CMD\_DOWN, CMD\_LP, CMD\_HP

Supply Voltage 9 to 18v

Operating Temperature 100 °c. max

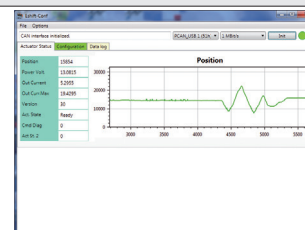
### PROGRAMMING SOFTWARE

Useful Validation Features :

Closed loop regulation on standby position

Vibration mode to help the disengagement and avoid dog to dog

Progressive pushing



### REFERENCES

E-Shift2-LV: Electromagnetic actuator.

RO option: Ball joint mounting.

SP option: Contactless position sensor.

PROG-E-Shift2-LV: Programming kit.