

XAP IS THE LEADER IN ELECTROMAGNETIC ACTUATORS FOR SEQUENTIAL GEARBOXES.

The E-Shift1 is an electric push/pull actuator developed specifically for the requirements of modern motorsport to command with sequential gearbox.

The E-Shift1 is a dual block assembly. The installation is very simple and once installed calls for very little service, unlike pneumatic and hydraulic systems where the installation requires many components and regular service.

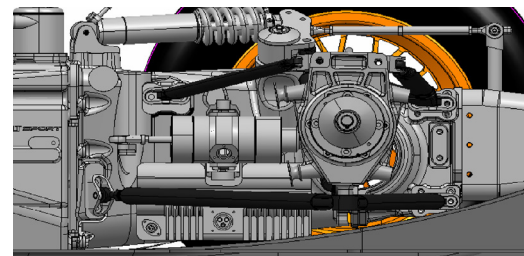
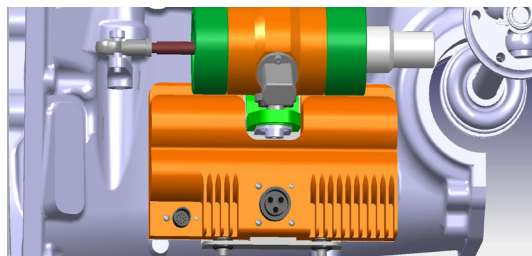
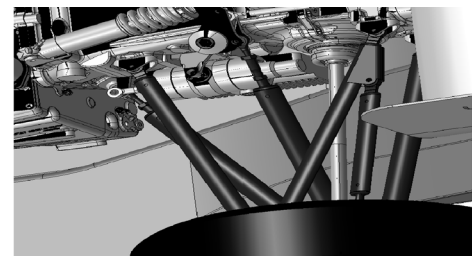
XAP's electromagnetic actuators are reliable, consistent and do not need much maintenance.

POWERFUL AND RELIABLE ELECTROMAGNETIC GEARBOX ACTUATORS.

- MOVING MAGNETS TECHNOLOGY
- MAGNETIC SPRING INSIDE
- HIGH PUSH/PULL FORCE
- VERY RELIABLE.
- QUICK GEAR CHANGE TIME
- LOW MAINTENANCE
- MORE COMPETITIVE THAN COMPRESSED AIR-TECHNOLOGY
- AUTO SPORT CONNECTOR
- PROGRESSIVE PUSHING MODE
- ISOLATED POWER AND CAN
- NO PUMP, NO SEAL, NO TUBE, NO FLUID ...

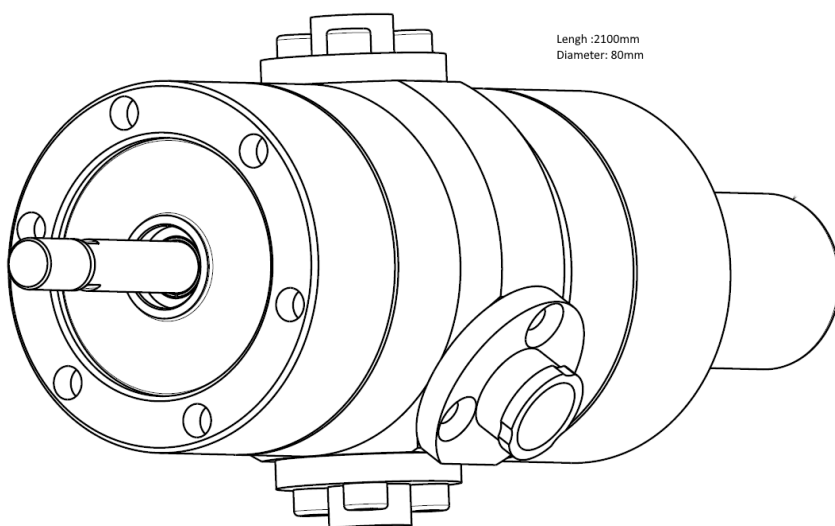
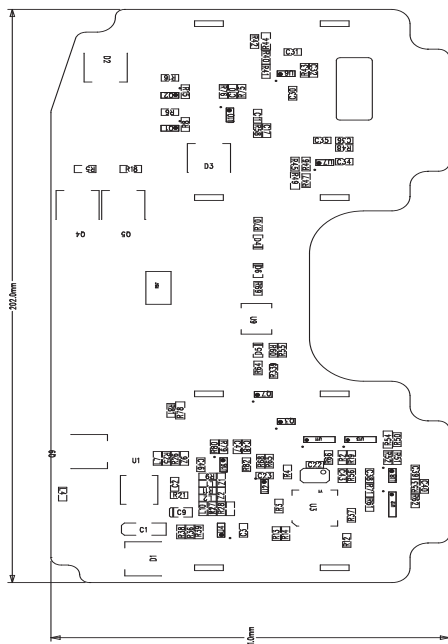
**CAR ELECTRIFICATION
IS THE FUTURE OF MOTORSPORT !
ASK US TO SHIFT FORWARD**





► GEARBOX ACTUATOR: **E-SHIFT1**

DIMENSIONS



TECHNICAL SPECIFICATIONS

STROKE +/- 18 mm.

Electric consumption Equivalent to 20 W for one gear shift each two second

Peak current 30 A

Started pushing force 500 N max

Middle pushing force 200 N max

Diagnostic on Can YES

Command by Can YES

Command by wire CMD_UP, CMD_DOWN

Supply Voltage 9 to 18v

OPERATING TEMPERATURE 100 °c. max

PROGRAMMING SOFTWARE

NONE

REFERENCES

E-Shift1: Electromagnetic actuator.

RO option: FR2010 bracket.

SP option:

CLICK HERE TO ORDER ON STORE.XAP.FR